

LT-GDM-02

Ground-Detecting Module

Product Specifications

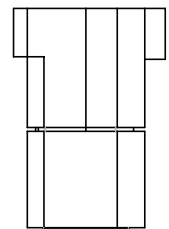
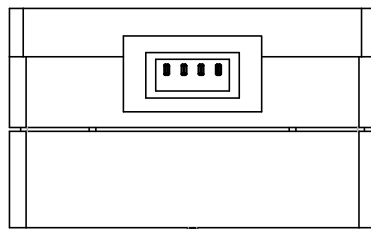
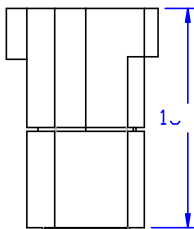
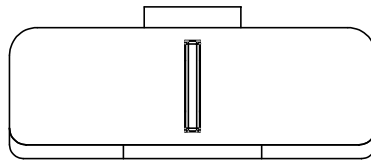
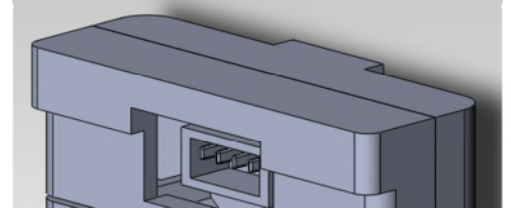
SPEC. NO. : SZ21082401
DATE : 2021/08/24
REV. : A/0

Approved By:

Checked By:

Prepared By:

Dimensions of Module



Notes:

1. All dimensions are in millimeters.
2. Tolerance is $\pm 0.50\text{mm}$ unless otherwise noted.
3. Specifications are subject to change without notice.

Features

- Pb free product—RoHS compliant
- Fast response time
- High sensitivity
- Invisible wavelength $\lambda=940\text{nm}$
- Integration structure

Typical Applications

- Intelligent Sweeping Robot

Absolute Maximum Ratings at $T_a=25$

Parameter		Symbol	Ratings	Unit
Input	Power Dissipation	P_d	170	mW
	Reverse Voltage	V_R	5	V
	Forward Current	I_F	100	mA
	Peak Forward Current ^{*1}	I_{FP}	250	mA
Output	Collector Power Dissipation	P_c	75	mW
	Collector Current	I_C	20	mA
	Collector-Emitter Voltage	V_{CEO}	30	V
	Emitter-Collector Voltage	V_{ECO}	5	V
Electrostatic Discharge (HBM)		ESD	4000	V
Operating Temperature Range		T_{opr}	-25 to + 65	
Storage Temperature Range		T_{stg}		

